

RAPPS NEWSLETTER

Spring 2011
Rutgers University

Bloustein School of Planning & Public Policy

UPCOMING EVENTS

MAY 14: Graduation BBQ

What: food and games

When: 12 to 4 pm

Where: Johnson Park, Grove 3

MAY 15: Bloustein Commencement & Reception

What: Caps and gowns and diplomas

When: 2 pm

Where: Nicholas Hall, Cook Campus

MAY 18-19: Green Solutions for Urban New Jersey Conference

What: Learn how "real world" green solutions can improve the urban landscape

When: all day - both days

Where: Jersey City & Newark

JUNE 11: Paterson Walking Tour & Neighborhood Development Presentation (APA-NJ-YPG Event)

What: I hear there is a waterfall...

When: 10 am - 4 pm

Where: meet at the Paterson Museum

JUNE 12: Raritan River Float

What: \$10 paddle and free picnic

When: meet at 8:30 am

Where: meet at Boyd Park

JUNE 16: 3rd Annual Sustainable Raritan River Conference

What: learn about that river over there

When: all day

NEW BIKE-PED GROUP FORMS WITH MASSIVE SUPPORT

by Betsy Harvey, MCRP '12

The rapid growth in student-led interest groups at Bloustein this year is likely unprecedented.

If you haven't noticed yet, Bloustein students tend to be in support of non-motorized modes of transportation. In response to this strong support of bike/ped planning and issues, a group of students formed a new interest group this semester to provide an outlet for students interested in these issues. Dubbed *Walk Bloustein Bike Bloustein* (or WB3 for short) the group is led by co-presidents Dorothy Le and Andrew Kay. The organization's goal is to provide an opportunity for students to learn more about bicycle and pedestrian planning and advocate for improved biking and walking facilities on campus.

"Bloustein has always been a leader in non-motorized transportation planning and policy issues," Co-President Andrew Kay says. "We attract a great number of students who are very interested in these modes. This group is about connecting those students with one another and creating an outlet for them to explore their passion for human powered transportation."

The group has already started to develop a bike share program to be implemented at Bloustein, created a bike map of New Brunswick and the members participated in several group bike rides. The group is still young and open to new ideas for events, activities and discussion. To receive updates and become part of the conversation, join the group's Facebook page and Google Group by contacting WB3 secretary Chris D'Antonio at chrdanto@gmail.com. ■



WB3 hosted an information session on biking during Admitted Student's Day. (Photo by Dorothy Le)

SNOWBALL 2011: THE BIGGEST SNOWBALL EVER

by Marley Bice, MCRP '12

Nearly 100 Bloustein students, staff and faculty graced the halls of the Elks Lodge on February 18th for what was invariably the biggest snowball ever. A lively crowd including some of our favorite professors made the event a success. The students were dressed up, the dance floor was full, the raffle items were won, the bartenders were funny and the tiramisu was delicious!

As always, the Bloustein Snowball is the official announcement and celebration event of the annual RAPPS student scholarship. In keeping with his well-known verbacious style, **Chris Dochney** took home the over-sized \$500 check and spent it “wisely” in a fashion fitting of a true Bacchanalian.

The essay prompt was: “Using example(s) from an area of planning or policy that interests you, tell us how planners and policy-makers ought to deal with incomplete information and uncertainty.”

Part of Chris’ winning reply was: “They must make a decision one way or another based on what they feel would be of greatest benefit to the community. [...] All that can be done is to do what seems to be most appropriate in the given context. Hopefully this will prove to be beneficial in time. If not, one must have the humility to accept responsibility and then take corrective actions. This is the only way that planning and policy decisions can be made. They are hopefully informed and supported by numbers and endless streams of data, but ultimately the decision lies in the heart of the subject making it, and in their confidence in their own judgement.” ■

THANKS TO
OUR 2011 RAFFLE ITEM
DONORS AND SPONSORS

The State Theatre
George Street Camera
Jersey Subs
DINER
Tony Nelessen
Chris Dochney
Clydz
Tumulty’s
Matt Michalak
Tim Hough
Hawk Krall
Bloustein



Photos courtesy of Julia Friedmann, Betsy Harvey and Ena Kumar.



INTERNATIONAL DEVELOPMENT FINDS A HOME AT BLOUSTEIN

by Betsy Harvey, MCRP '12

The International Development Interest Group (IDIG) became an official graduate student organization in the fall; a reflection of increasing interest in the field and several students' hard work. This year, the group, chaired by Brittany Bendix with the help of Betsy Harvey and Susannah Dyen, and faculty advisors Gabriella Carolini and Bria Holcomb, brought speakers to the school and held monthly meetings fueled by delicious and diverse foods. IDIG hosted visits from Berkeley's Ananya Roy, Jeffrey Gutman, a former vice president at the World Bank (and a Bloustein MCRP alumni!), and a talk from an independent international transportation planner with decades of experience, Jonathan Richmond. IDIG also serves as a resource for fellowship, job and grant opportunities, as well as for events put on by Bloustein students (such as the Haiti Forum) or related departments at Rutgers, such as a chocolate tasting and discussion event hosted by the Plant Biology department.

STUDENT LED AND PURPOSE-DRIVEN

The purpose of IDIG is driven wholly by the needs of its student members. Any member interested in planning an internationally-oriented event is encouraged to do so. For example, a group of students, led by David Stanek, spearheaded the development of a course called Slums of the Global South for the spring 2011 semester. Our meetings have also always included a discussion and debate on a development topic, from disaster planning to global agriculture. During the April meeting we set up a formal debate led by Professor Holcomb on whether tourism harms or hurts developing countries. Earlier in the year, Professor Carolini presented on her work on participatory budgeting and water and sanitation planning in Mozambique.

WAYS TO BE INVOLVED NEXT YEAR

Next year IDIG will continue to organize speakers and host events. We intend to work more with other groups on campus (particularly Engineers Without Borders) and to become a more complete resource for the Bloustein and Rutgers community at large with the development of a website. IDIG offers a great platform for learning about development issues that are not taught in class, obtaining valuable career information, and of course eating great food in the excellent company of Bloustein students and professors. To get updates from IDIG, search for "IDIG" on the Sakai site or visit <http://policy.rutgers.edu/idig/>. ■

PROJECT HIGHLIGHTS & STUDENTS IN THE NEWS

The Bloustein School of Planning and Public Policy is now ranked 3rd on Planetizen's Top 10 Graduate Urban Planning Programs.

In February 2011, Senator Robert Menendez (D-NJ) joined the Solar Decathlon Team New Jersey (including several MCRP students) and other green building industry experts at the Bloustein School for a special presentation of eNJoy! A Generation House, the Rutgers-NJIT submission to the national Solar Decathlon competition.



Photo source: <http://policy.rutgers.edu>

The Fall 2010 Comprehensive Planning Studio which studied the Hotel-Motel District of Ocean City, New Jersey, has been awarded the New Jersey Planning Officials' Achievement in Planning Award. Congratulations!

The Spring 2011 Urban Design Studio which looked at revisioing the Alexander Street - University Place corridor in Princeton has been invited to present their work for the New York Metro chapter of the American Planning Association.

Congratulations to two of our very own MPP students, Sean Cavanaugh and Maria DeFazio, who have been selected as 2011 Presidential Management Fellows, a prestigious accomplishment.

Lauren McKim (MCRP '12) is now the Region I Rep for the Student Representatives Council of the American Planning Association.

MCRP STUDENTS AT PLAY IN THE GARDEN STATE AND BEYOND

FALL 2010 GRADUATE PLANNING STUDIOS



Milford Renewable Energy Feasibility Study

Led by Professors Clint Andrews and Lyna Wiggins

Client: the Borough of Milford

Location: Milford, New Jersey

In 2010, Milford updated the land use element of their Master Plan to include provisions for the allowance and regulation of wind, solar and biomass facilities in response to evolving energy and economic opportunities involving renewable energy technologies, rising energy prices and growing demands for local energy production. The students in this studio then conducted a renewable energy feasibility studio for the Borough and produced a report that assessed the potential use of these technologies, a discussion of relevant agencies and policies that impact renewable energy land uses, and a framework outlining how the Borough of Milford could proceed with renewable energy generation land uses.

The Meadowlands Urban Design Studio

Led by Adjunct Professor Michael Farewell

Location: The Meadowlands Area, New Jersey

Students in this studio studied a section of the Meadowlands region of northern New Jersey and designed a community where a population of 30,000 people could live and work. The major challenge was to design this medium-sized community while still considering the fact that the Meadowlands are an environmentally sensitive ecosystem.

Hotel-Motel District Study for the City of Ocean City

Led by Adjunct Professors Susan Gruel and Fred Heyer

Client: The City of Ocean City

Location: Ocean City, New Jersey

The students in the comprehensive planning studio were given the task to examine the City of Ocean City's hotel and motel zone, a problem area for the town, to determine the best way to encourage hotel development and promote the tourism industry. The solution recommended by the students is to implement a form-based code in the district which will allow for flexibility of development that wasn't previously available and to redevelop municipally-owned surface parking lots into resort hotels and extended boardwalk attractions.

Bicycle Renting Studio

Led by Ph.D. student Nick Klein

Client: Rutgers University – Department of Transportation Services

Location: New Brunswick, New Jersey

Students in this studio evaluated existing bicycle renting programs such as BIXI in Montréal, Québec and Capital Bikeshare in Washington DC and created a proposal to implement this kind of program on the New Brunswick/Piscataway campuses of Rutgers University.



Photos clockwise from top left: bike sharing in Brooklyn Bridge Park (The L Magazin.com), typical hotel in Ocean City, NJ (Destination360.com), 3-D Rrending of a solar farm for Milford, NJ (nj.com), the Meadowlands (NJ Meadowlands Commission).

SPRING 2011 GRADUATE PLANNING STUDIOS

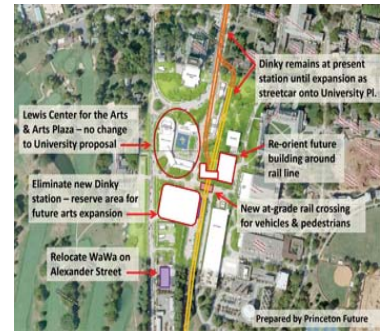
A Vision for the Alexander Street - University Place Corridor

Led by Adjunct Professors James Constantine and Gonzalo Echeverria

Client: Princeton Future

Location: Princeton, New Jersey

This studio focused on a mile-long transit corridor in Princeton, New Jersey from regional, community and site-specific scales. Issues that were explored include expanding the existing Dinky rail shuttle as a streetcar, integrating a proposed Arts Neighborhood and testing a form-based code with redevelopment designs. Studio members gained hands-on experience facilitating stakeholder meetings and a public charrette-style workshop where their urban design plans were presented.



Hoboken Terminal Intermodal Study

Led by Thomas Schulze

Client: NJ Transit

Location: Hoboken, New Jersey

Students in this studio developed a comprehensive plan for the area outside the Hoboken Terminal in southern Hoboken. The area is one of the most active inter-modal hubs in New Jersey, containing rail, light rail, bus, ferry, taxi, bike and pedestrian activities. Due to this concentration of activity, there is also great potential to improve the area's land uses and economic development potential.



Ports and People: Putting Ports on the Community Development Map!

Led by Professor Kathe Newman

Client: The Coalition for Healthy Ports

Location: Newark/Elizabeth, New Jersey

The students in this studio studied the ports of Newark and Elizabeth in detail to better understand what ports mean to the surrounding communities and how to assess the benefits and problems that proximity to ports cause. They worked collaboratively to think about how ports work, and how ports affect community occupational health, land use, job quality and the physical environment of the surrounding communities and the larger region.



Innovations in Local and Community Economic Development

Led by Roland Anglin

Client: The City of Plainfield

Location: Plainfield, New Jersey

This studio looked at emerging innovations in the practice of local and community economic development, focused centrally on cities, communities and neighborhoods that have improved on standard practice to better promote the growth and development of regional and local economies.



Planning Rural Decline: Mapping the Buffalo Commons

Led by Professor Frank Popper

Location: The Buffalo Commons, the Great Plains Region

This studio focused on the depopulating rural Great Plains as a region and the concept of a Buffalo Commons as a possible future for this region. The studio also mapped potential Buffalo Commons locations and evaluated the concept at various geographic scales.



Sustainable Raritan River Studio: Highland Park Waterfront Restoration

Led by Judy Shaw and Mark Gallagher

Client: The Borough of Highland Park

Location: Highland Park, New Jersey

The Sustainable Raritan River Studio conducted a re-visioning exercise whereby the full potential of the existing environmental center and overall site is realized. The studio began with a detailed study of the site history and existing conditions and then focused on using restoration as a platform for the redevelopment of the site to provide environmental value for the community and region.

From top: options for the Dinky (Princeton Future), Hoboken Terminal (Hoboken Condos), Newark/Elizabeth Ports (Flicker/dsearls), three corners (Jed Drolet), the Highland Park Environmental Center (Melissa Basile).

A STUDY IN WHY GRADUATE STUDENTS CAN'T PLAY SPORTS

VOLLEYBALL X by Captain Jarrod Grim

The Bloustein Ballerz competed this winter in intramural volleyballX. Despite an ever changing roster and difficult schedules, the Ballerz were able to claim a couple wins. VolleyballX MVP goes to Pat Jensen for bringing the heat to every game. Runner-up goes to Dave Stanek, notably for his talents in being super tall.

INNER TUBE WATER POLO by Captain Mark Seinen

The EJB Sea Monkeys inner tube water polo team braved lightning storms and shirtless winter nights, but were unable to repeat their championship performances from the last two seasons. The team kicked, splashed and gyrated its way to a 0-5 record. Jake "Water Wings" Richman provided Tuvelian goaltending all season long and veteran defenseperson Anna "Xanthan Gum" Grosso locked it down on the back end. Pat "Bread Winner" Jensen rose to the occasion, while Mark "Pacific Salmon" Seinen engaged in a participatory dialogue with a nemesis referee. Despite the lack of success in the pool this season, the young squad should be in good hands next year, led by standout rookies Christine "Green Pepper" Bell, Laura "The Laser" Chamberlain, Betsy "Don't Tread Water on Me" Harvey and Neg "Lake Superior" Lakew.

ROLLER HOCKEY by Captain Mark Seinen

The Bloustein Bullies roller hockey team had a successful sophomore season, going 2-3 and earning a playoff berth for the second consecutive spring. The ragtag bunch was led by Blou-goons Dave "Jersey Barrier" Novak, Jake "Buffalo Wing" Richman and Mark "Canadian Lumber" Seinen. The Bullies really came together in the playoffs, pushing a stacked Team Iceland to the brink of elimination while Learning A Whole Lot About Life and providing redemption for embattled Coach Bombay.

SOFTBALL by Captain Max Azzarello

It was a riveting year for Blou Balls. They started off to a torrid 3-0 record, defeating the Skull House Raiders (by forfeit), Whistling Whiskey (by forfeit), and Travelers Club (also by forfeit). Alas, they suffered a 10-run mercy rule loss to the Clown Punchers in their final game of the regular season. Nevertheless, Blou Balls stepped it up for their semi-final playoff game against Madoffs Mets. Although Blou Balls pulled ahead in the second inning the Madoff Mets eventually defeated the resilient Blou Balls in a memorable 19-18 battle.

YOUR 2011 RAPPS BOARD

President	<i>Jorge Santos</i>
VP Public Policy	<i>Rob Houston</i>
VP Urban Planning	<i>David Nelson</i>
VP PhD Program	<i>Brian Stromberg</i>
Treasurer	<i>Katie Nosker</i>
Secretary	<i>Betsy Harvey</i>
Service Chair	<i>Ena Kumar</i>
Activities Chair	<i>Jarrod Grim</i>
Social Justice Chair	<i>Susannah Dyen</i>
Editor	<i>Marley Bice</i>
GSA Representative	<i>Tiffany Pryce</i>
APA Representative	<i>Lauren McKim</i>
University Senator	<i>Katie Brennan</i>

WHAT'S NEW WITH RAPPS?

RAPPS now has an official blog to share all Bloustein graduate student research, interests, events, reviews, photos. Check it out at: <http://therappsblog.blogspot.com>. You can submit articles to the RAPPS blog by e-mailing rappsmailbox@gmail.com.

.....

Are you ready for Fall Welcome Week? Potlucks, game nights, socials, community service events, bike rides, and more!

.....

Look for more alumni networking and a possible student lounge redesign next semester!

.....

Be sure to submit stories about your research, work, travel or fun experiences to the RAPPS blog this summer!